



ARCHITECTS  
WITHOUT  
FRONTIERS

TRANSFORMING  
LIVES THROUGH  
DESIGN



CAKAUDROVE WOMEN'S RESOURCE CENTRE, SAVUSAVU, FIJI

Transform lives...  
**JOIN THE AWF NETWORK**

## OUR NETWORK PARTNERS

**THE AWF NETWORK PARTNERS** are a community of socially conscious Australian organisations, who want to give back in a structured and considered way which aligns with their organisational interests and values.

The AWF Network includes architects, landscape architects, urban planners, engineers, quantity surveyors and other land and property specialists. All AWF Network partners are highly qualified professional organisations with extensive project portfolios in Australia and overseas.

The generous support of the Network Partners enables AWF to continue delivering humanitarian projects in a sustainable way.

BONACCI

Clarke  
Hopkins  
Clarke

COX

HASSELL

hayball

Jackson  
Clements  
Burrows  
Architects

LCI

Milieu

NBRSARCHITECTURE.

RD RobertsDay  
planning design place

SB

Tract

WT



How do you create a sustainable community, in all senses of the word: socially, commercially, economically, environmentally? Our work with AWF aligns perfectly with these concerns. We can aid disadvantaged communities by helping them realise their cultural, touristic, and economic sustainability. This partnership aligns with everything we do."

DEITER LIM - MANAGING DIRECTOR, TRACT





“We recognise that, in partnership with AWF, our industry has a critical responsibility to the future of our communities and the environment through the built work that we leave behind, both locally and abroad. Importantly, we have the opportunity to work with communities to transform lives through improved health and well-being.”

VERYAN CURNOW — ASSOCIATE DIRECTOR, JCB

## OUR VISION

“AWF is destined to develop into one of the greater forces for good on this battered planet.”

PHILLIP ADAMS, AWF PATRON

**OUR VISION** To transform lives through design.

**OUR MISSION** To improve the built environment of communities in need. We facilitate the design and construction of health, education and community projects primarily in Australia and the Asia Pacific Region.

The AWF Network includes architects, landscape architects, urban planners, engineers, quantity surveyors and other land and property specialists. All AWF Network partners are highly qualified professional organisations with extensive project portfolios in Australia and overseas.

The generous support of the Network Partners enables AWF to continue delivering humanitarian projects in a sustainable way.

**OUR VALUES** To work collectively, engage communities, design sustainably, at all times pursuing transparency, equity and fairness.

Through a range of culturally sensitive and environmentally sustainable PROJECTS, Architects without Frontiers has helped transform the lives of over 4,000 people in five significant ways, since 2005:

- Delivering over 45 health and education projects in 14 countries
- Collaborating with 70 communities to improve their social and physical infrastructure
- Partnering with 60 Australian architects in delivering pro-bono design services
- Training 80 Australian architects to work in the humanitarian sector, through a series of training courses, in association with the Australian Red Cross and Australian Institute of Architects.



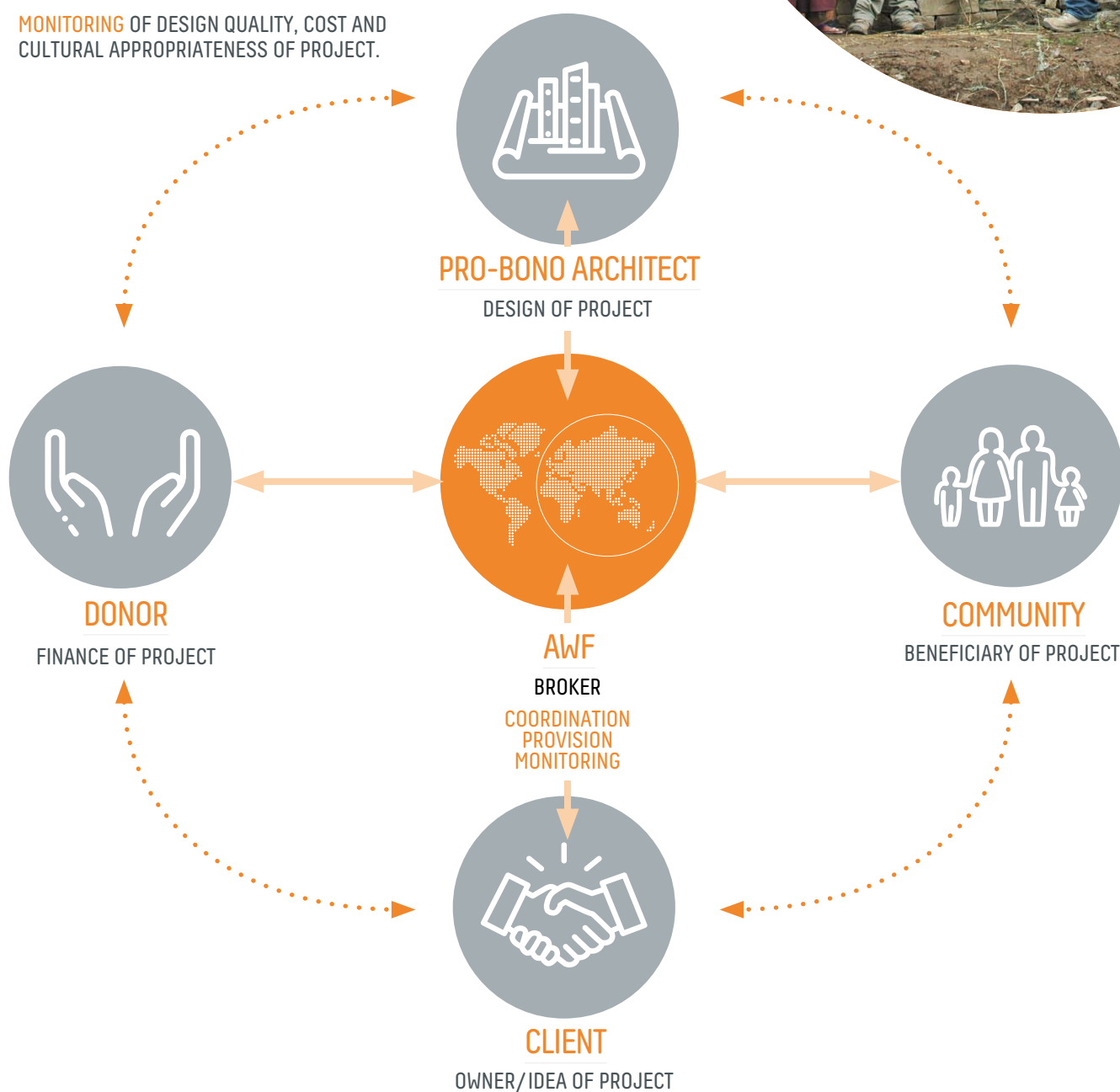


# HOW WE WORK

Architects Without Frontiers and its Partner Network assist communities and community organisations, both in Australia and overseas by providing design services for architectural, building and planning projects. These services typically include, but are not limited to: brief development, feasibility studies, concept design, and specialist design advice.

## AWF'S ROLES

- **COORDINATION** OF KEY PROJECT STAKEHOLDERS.
- **PROVISION** OF PRO-BONO DESIGN SERVICE FROM SKETCH DESIGN TO CONSTRUCTION.
- **MONITORING** OF DESIGN QUALITY, COST AND CULTURAL APPROPRIATENESS OF PROJECT.





## MANINGRIDA ARTS & CULTURE PRECINCT NT, AUSTRALIA

KEY PARTNERS: HASSELL, TRACT, HAYBALL,  
BONACCI, LCI, WTPARTNERSHIP



At a philosophical level, I think our industry can, and really should, contribute—in fact, I think it's undervalued in terms of the contribution it can make—to how we live, and how we interact, and to every aspect of our lives."

MARK LOUGHNAN — PRINCIPAL, HASSELL

# OUR PROJECTS: A GLOBAL IMPACT



## 1 AFGHANISTAN

HOPE HOUSE  
KABUL

## 2 AUSTRALIA

COLLINGWOOD CHILDREN'S  
FARM APIARY  
COLLINGWOOD, VICTORIA

FIRST STEP CENTRE  
ST KILDA, VICTORIA

FIRSTSTEPS COUNT  
FAMILY CENTRE  
TAREE, NSW

GOOD SAMARITAN INN  
MELBOURNE, VICTORIA

GUNALANYA  
CULTURAL CENTRE  
OENPELLI, NT

MANINGRIDA WELCOME PRECINCT  
NT

NORFOLK ISLAND HOSPITAL  
NORFOLK ISLAND

PALM ISLAND  
TOWN SQUARE  
PALM ISLAND, QLD

RICK FARLEY RESERVE BUSH  
CAMP + WALKING TRACK  
WILLANDRA LAKES, NSW

WADEYE COMMUNITY  
ARTS & BUSINESS CENTRE  
NT

UNCLE DENNIS' HOUSE  
STRADBROKE ISLAND

CARLTON NEIGHBOURHOOD  
LEARNING CENTRE  
VICTORIA

## 3 CHINA

TIANJIN EARTHQUAKE PROJECT  
SZECHUAN PROVINCE

## 4 FIJI

NASEAKULA COMMUNITY  
CHURCH EXTENSION  
LABASA

RA-MARAMA CULTURE  
AND INFORMATION HUB  
SAVUSAVU

## 5 INDIA

ANGANWADI (PRESCHOOL)  
PROJECT  
AHMEDABAD

ONE LIFE TO LOVE  
SPECIAL NEEDS ORPHANAGE  
NEW DELHI

## 6 KENYA

ABERDARE RANGES PRIMARY  
SCHOOL  
NAKURU

## 7 MALAWI

YOUTH CENTRE  
THYOLO

## 8 NEPAL

AAA/AWF VOLUNTEER TRIPS  
ANNAPURNA

GOSHING KAULE  
SCHOOL & KINDERGARTEN

WASTE MANAGEMENT PROJECT  
EVEREST

EARTHQUAKE REPOSE 2016  
BAGWA

## 9 PAPUA NEW GUINEA

EAST NEW BRITAIN HISTORICAL  
+ CULTURAL CENTRE  
KOKOPO

HOSPITAL  
KOMPIAN

## 10 SOUTH AFRICA

INDLUVO COMMUNITY CENTRE  
CAPE PROVINCE

## 11 SRI LANKA

DICKWELLA NORTH SCHOOL  
MATARA

MOBILE LIBRARIES  
GALLE + HAMBANTOTA

## 12 THAILAND

ASIA INDIGENOUS PEOPLES PACT  
CHIANG MAI

## 13 UGANDA

HIV MEDICAL CENTRE  
MANNYA

## 14 VIETNAM

DIEN BAN DISABILITY CENTRE  
HOI AN

HOUSING FOR HOMELESS YOUTH  
HOI AN





## JOIN A COMMUNITY OF SOCIALLY CONSCIOUS AGENCIES WORKING COLLECTIVELY TO DELIVER HUMANITARIAN PROJECTS...



Opportunity for **staff involvement** with local and international humanitarian projects\* allowing for professional development.



**Positive Brand Exposure** — a dedicated page on our website profiling your organisation. Acknowledgement of 'Partner' designation on selected printed, social media and newsletter material.



Opportunity for **staff to volunteer** on Design Build trips to Nepal.



Opportunities to **network and exchange ideas** with other leaders in design, architecture and built environment.



Invitations to exclusive **AWF Network talks and events**. Informative AWF presentations once a year to staff or clients.



Contribution of \$12,000 per annum is **tax deductible**.

## BECOMING A NETWORK PARTNER

Please complete the Network Membership enquiry form, available for download from:

[architectswithoutfrontiers.com.au/connect/](http://architectswithoutfrontiers.com.au/connect/)








ARCHITECTS  
WITHOUT  
FRONTIERS

6 RIVERSIDE QUAY  
MELBOURNE VIC 3000

INFO@ARCHITECTSWITHOUTFRONTIERS.COM.AU  
ARCHITECTSWITHOUTFRONTIERS.COM.AU

-  @AWF\_AUS
-  ARCHITECTSWITHOUTFRONTIERS
-  ARCHITECTS WITHOUT FRONTIERS

#### AWF CHAIR

Phillip Greenham

#### EXECUTIVE DIRECTOR

Esther Charlesworth AM

#### BOARD MEMBERS

Leeanne Marshall  
Norman Day  
Paul O'Connor  
Robert Stent

#### PATRONS

The Hon. Gareth Evans AO, QC  
Phillip Adams AO

#### AMBASSADORS

Peter Maddison  
John Gollings

#### AWF NETWORK

Tract Consultants  
COX Architecture  
SJB  
Bonaccci Group  
Hassell  
Hayball  
LCI  
Roberts Day  
Jackson Clements  
Burrows  
WT Partnership  
Milieu  
Clarke Hopkins Clark  
NBRSArchitecture

#### COORDINATOR

Teresa O'Shannassy

#### PROJECT COORDINATOR

Sarah Schoffel

TRANSFORMING  
LIVES THROUGH  
DESIGN