



architects **without** | frontiers
australia



architects without frontiers | annual report

2008 - 2009

contents

Introduction	1
About AWF.....	2
Outcomes 2008-2009.....	3
AWF focus 2009-2010	4 - 5
Membership update.....	6
Insurance	6
AWF directors	7
AWF staff.....	8
Budget report.....	9 - 10
AWF Supporters	11
Project Outlines	12

images on front cover, from L to R:
Innauguration of Bholu 7, Ahmedabad;
Bholu 5 exterior, Ahmedabad;
Monwabisi Park building, South Africa; and
Kianh Orphanage, Hoi An, Vietnam



Introduction by Esther Charlesworth, AWF Executive Director

Thanks to funding from the Planet Wheeler Foundation granted in June 2008 (and continuing into 2009), Architects Without Frontiers has been able to significantly increase our capacity in the 2008-2009 financial year. This grant has allowed AWF to employ professional staff to manage and build a sustainable administrative infrastructure that makes it possible for the organisation to provide the services required by its members and partners, providing successful project outcomes to communities.

This growth in capacity was supported by the assistance of RMIT who generously provided AWF with office space and all the accompanying services - tech support, telephones, postage and accounts management.

In 2009, thanks to this additional capacity, AWF was able to undertake a much-needed strategic planning workshop which resulted in a refinement and restructuring of the organization which is detailed below. We believe that this reformation will allow AWF to provide better services to those communities most in need.

We look forward to working with our supporters and clients in 2010.

Esther Charlesworth

AWF Executive Director

About AWF

Architects Without Frontiers Australia (AWF) is a not-for-profit organisation whose mission is to engage the Australian design professions in pro-bono projects that improve the living conditions of communities in need with a focus on the Asia-Pacific region.

AWF is committed to participatory, sustainable and community-focused outcomes as it engages with the architectural and related built-environment professions in providing pro-bono design services and model construction projects for those whose needs are greatest.

AWF, through its volunteers and supporters, focuses on developing the capacity of partner organizations and communities thorough project outcomes, skills sharing and mutual knowledge sharing.

Architects Without Frontiers (AWF) works within the framework of the Millennium Development Goals, especially in relation to overcoming the causes of poverty and improving education, gender equality, health and environmental quality. AWF adopts a Results Based Management approach to development and has been working with disadvantaged communities, irrespective of race, religion, creed or political affiliation, in 12 countries in the Asia-Pacific, Africa and beyond since its formation in 1999.

VISION

Architects Without Frontiers has a vision of a world in which marginalised communities can benefit from the services of architects and other built-environment professionals as they seek to improve their lives and living conditions through sustainable livelihoods, housing and services.

MISSION

The mission of Architects Without Frontiers is to engage the Australian design professions in pro-bono projects that improve the living conditions of communities in need, irrespective of race, religion, creed or political affiliation.

GOALS

AWF is committed to two goals:

- To improve the lives of disadvantaged communities through sustainable design practice
- To mobilise Australian architects and built environment professionals towards socially responsive design.



Outcomes 2008-2009

1. Operational Outcomes

The most significant organisational events for AWF in 2008-2009 were:

funding

- Securing funding of \$50,000 from the Planet Wheeler Foundation for organisational expenses for the 2008-2009 period, and subsequent additional funding of \$50,000 for the 2009 - 2010 period.

staff

- The employment of a part time (4 days/week) executive officer working between an office at RMIT and the Engineers Without Borders office.
- Employment of a part-time (2.5 days/week) programs officer working out of an office at RMIT.

strategic plan

- Development of a strategic plan which develops and builds AWF's capacity into 2012 and beyond.

website

- A new and improved AWF website.

newsletters

- Production of regular AWF Newsletters in October 2008 and May 2009.

talks

- The revival of the bi-monthly Melbourne Talk Series lectures and meetings.

project management

- Improvement of AWF's project management capacity and experience.
- Development of administrative systems.

2. Project Outcomes

Significant project outcomes for AWF in 2008-2009 were achieved in Australia, India, South Africa, Vietnam, PNG, Fiji and Malawi. Details of these projects can be seen at the end of this report.

Focus of AWF 2009 - 2010

The development of a strategic plan in June 2009 increases and builds AWF's capacity into 2012 and beyond. Drawing on past experiences, AWF identified areas in which we could most effectively expand. This includes:

- Consolidating project experience and developing mechanisms to improve AWF project efficiency and delivery.
- Strategic Plan 2009 - 2012 was completed in July 2009 in order to facilitate the above.
- Improving capacity to deliver projects through employment of operational staff.
- Improving volunteer engagement through development of wider awareness and educational programs for students, graduates and professionals.
- Narrowing our project focus from 12 countries around the world down to 6 countries in the Asia-Pacific region. Specifically, this will allow AWF to more effectively engage with local communities and maintain long-term partnerships.

The full Strategic Plan is available on the AWF website, but the main outcomes of this are:

- The development of AWF's organisational structure based around four core focus objectives: projects, education and research, organisational development and membership services. The expansion of these services relies on having human resource capacity to deliver projects, train volunteers and mobilise professionals towards social responsibility. This requires AWF to shift from a volunteer run organisation to a paid staff base.
- Overseeing these four focus areas will be an AWF Executive, who will report to an expanded board. AWF will also develop an AWF Advisory Committee to provide advice and mentoring directly to projects.

AWF's Strategic Plan looks at four main objectives, which are:

- **PROJECTS** - AWF will continue working to develop long-term partnerships with our focus countries, and roll out the project management framework that has been in development for all project. We will work on developing and implementing a monitoring and evaluation framework for all completed projects. AWF will continue to develop the pro-bono firm model for projects in which a firm is engaged to take on a project which is overseen by AWF.



- **EDUCATION AND RESEARCH** - AWF will work to develop partnerships with Australian universities and expand the Building the Community model workshop across other Australian universities. We will run annual Red-R training workshops, get further CPD accreditation for AWF events from professional industry bodies such as the RAIA, AILA and PIA. AWF will continue to run CPD talks and events. AWF is currently working on development of an online platform for resource sharing and establishing resource sharing with other design non-profits.
- **ADMINISTRATION** - AWF achieved endorsement as a deductible gift recipient from the ATO in July 2009. We will continue to work towards Approved Organisation status under the Overseas Aid Gift Deduction Scheme. This will require the continued development of reporting and evaluation systems within the organisation as well as developing standardised systems of operation. In August 2009 AWF obtained the services of a Communications Consultant who will work to develop AWF's communications strategy. AWF are working to improve our website and online social networking interfaces.
- **MEMBERSHIP AND PARTNERSHIP** - AWF will work towards increased membership, but also improved membership services through training, communications and volunteer opportunities. Part of this improved service will include the activation of AWF chapters in major Australian cities and the development of university chapters. We will expand AWF's corporate membership and develop formal partnerships with professional industry bodies such as RAIA, AILA and PIA.

Membership update

In 2008 - 2009 the breakdown of AWF membership was as follows:

Total Membership: 120
NSW Members: 37
Victorian Members: 49
Queensland Members: 15
Other: 19

The membership for the 2007 - 2008 year was 86, so there was an increase in membership of 24, however many of the members were new rather than renewing, despite a membership reminder mailed out to all members in late 2008.

In this period the membership registration method was changed so that people can now register online. AWF pays a form-building site - www.wufoo.com - to use their form collection and reporting technology. This costs AWF US\$9.95 per month.

Insurance

AWF held **Corporate Travel Insurance** in 2008-09. This was through Accident and Health International Underwriting Pty Ltd and cost \$1,185.00, and was valid until 30th August 2009.

AWF also took out **Combined General Liability Insurance** in January 2009 via Mutual Brokers. This includes:

New Association Liability through Vero Professional Indemnity which cost \$1922.86 and is current until 30/01/2010.

New Liability Insurance through QBE Insurance (Australia) Ltd, which cost \$907.50, and is current until 30/01/2010.



AWF directors 2008 - 2009



Esther Charlesworth – BArch (RMIT), MAUD (Harvard), PhD (York)

Esther Charlesworth is the founding director of Architects without Frontiers (Australia). She has worked as a Lecturer in architecture at QUT and was Visiting Assistant Professor of Architecture and Urban Design at the American University of Beirut. She is currently a senior research fellow at RMIT University, Melbourne. Esther has practiced architecture and urban design in Melbourne, Sydney and New York since 1983, before completing her Masters of Architecture and Urban Design at Harvard University in 1995. From 1995-1999 she was Senior Urban Designer with the City of Melbourne and is still the director of the CityEdge International Urban Design Series. Esther is recipient of five major international research awards to further her research into the role of architects in post-war reconstruction and recently completed a four-year project and book on divided cities (Beirut, Belfast, Jerusalem, Nicosia and Mostar), with colleague Jon Calame. She completed her Doctorate of Philosophy at the University of York (UK) in 2003.



Jane Rothschild - B.A. Brown University, M.Arch Harvard, MHeritage Conservation Sydney (current)

Jane is a co-founder of Dickson Rothschild, a multi-disciplinary firm of architects, urban designers, landscape architects and planners located in Chippendale, Sydney. Over the last 20 years, Jane has practiced architecture in both the US and Australia and has been responsible for the majority of Dickson Rothschild's private residential work. Jane's interests are focused in housing - both local and in developing countries - and in heritage conservation. She has also worked in Colombo, Sri Lanka. Jane joined AWF in 2005 and has been a Director since January 2007. Jane has also worked with Habitat for Humanity in Australia, Indonesia and Vietnam. Jane travelled to Aceh in 2006 reporting on Habitat For Humanity's reconstruction work and with Habitat For Humanity Vietnam (with Dickson Rothschild staff) developing housing and construction manuals. Jane is the AWF Project Leader for the Anganwadi Pre-schools Project in Ahmedabad, India.



David Anderson - B.A. (Arch), B.Arch, Reg. Architect Vic. (2000), Reg. Architect NSW (2002)

David runs a sole practice, and also works for Hayball Architects in Melbourne. He has worked with AWF and Ozquest for the past 2 years organising and participating in design build trips to Nepal. David was appointed a Director of AWF in October 2008.

AWF staff

executive officer



Lucinda Hartley B.A. (Env.) *Monash*, Grad. Cert. L.Arch., Grad. Dip. L.Arch. *Melbourne*

Lucinda joined AWF in May 2009 as the new Executive Officer, based in Melbourne. Lucinda is a Landscape Architect with extensive experience in international development and a diverse project experience across Asia and Pacific. For the past 14 months she has worked in Ho Chi Minh City, Vietnam as part of the 2008 Australian Youth Ambassador for Development program and the 2009 Endeavour Executive Award where she worked primarily with Habitat for Humanity Vietnam on slum mapping projects, low income housing, appropriate technology and participatory design workshops. Lucinda has also worked with the Asian Coalition of Housing Rights in Cambodia, post-tsunami reconstruction projects in Thailand and she was recently elected to the UN-HABITAT Youth Advisory Board.

Lucinda will work with AWF to coordinate current and new projects and regional programs in Asia Pacific. Lucinda will also assist with design workshops and the running of the organization. Lucinda is passionate about defining and implementing the critical role that designers can play in development. She looks forward to working with and learning from AWF staff and volunteers to grow the organization and to encourage design professionals generally to contribute to sustainable design solutions for other 90%.

program coordinator



Rebecca Adams M.Arch. (*RMIT*) B.A. (*Melbourne*)

Rebecca has worked part-time for AWF as program coordinator since January 2008. Rebecca is an architecture graduate of RMIT. Having been brought up in the Northern Territory, Rebecca has a strong interest in Indigenous issues, and wants to use her skills to assist in developing stronger communities. She has had the opportunity with AWF to work on Northern Territory projects in Maningrida, Gunbalanya and Wadeye.

Rebecca's work with AWF includes production of a newsletter, coordination of AWF's member services, management of AWF Indigenous programs, and ensuring that AWF complies with its governance obligations.



Budget report summary

AWF receives income from supporter contributions and philanthropic grants. Philanthropic grants are managed through RMIT which provides in-kind sponsorship through the provision of office space and support and financial management.

AWF Grants 2008 - 2009

funding body	project	grant amount (available 2008/09)	balance at 30 June
Planet Wheeler 2008 - 09	AWF Operations	\$50,000	\$31, 197
Planet Wheeler Vietnam	Hoi An Disability Day Care Centre	\$15,900	Included above
City of Melbourne (2008 - 09)	Anganwadis - India	\$8,000	\$2,618
Thomas Foundation (2007 - 08)	Indigenous Cultural Centres - Maningrida & Oenpelli	\$9,056	\$7,386
TOTAL		\$82, 956	\$41, 201

Expenses

Staff	
- Salaries + super, work cover etc	\$19, 686
Project Costs - including project related travel	\$8, 332
Administration	
- website	\$6, 922
- graphic design	\$750
- IT	\$67
- Printing	\$259
- Travel	\$1, 442
- Other	\$3, 181
- Miscellaneous	\$1,113
TOTAL	\$41, 775

AWF Other income and expenses 2008-2009

INCOME	Amount
Donations - General	\$4,064.20
Donations - Projects	\$5,304.24
Other Funds	\$115.17
Membership Fees - Total	\$8020.00
TOTAL INCOME	\$17,503.61
EXPENSES	
Accounting and Audit	\$1270.00
Administration Costs	\$1590.00
Bank Fees	\$337.10
Catering	\$198.00
Conference Costs and Subsidies	\$200.00
Filing Fees	\$383.00
Fines and Penalties	\$270.00
Freight	\$375.50
Insurance	\$1795.24
Interest Expense	\$0.13
Marketing	\$2719.05
Moving Expenses	\$258.00
Printing and Stationery	\$2411.10
Project Expenses	\$5,704.25
Sundry Expenses	\$3.30
Travel and Accommodation	\$639.58
Website Expenses	\$1250.00
TOTAL EXPENSES	\$19,454.25
Net Deficit	-\$1999.92

AWF Accounts - All supporter contributions are processed through AWF's bank account. This is audited each year by WHK (Level 32, 80 Collins Street, Melbourne, Vic 3000, Telephone 03 9258 6700).



AWF Supporters

Architects Without Frontiers is grateful for the generous assistance of all our supporters. The following ones need a special mention.

Planet Wheeler Foundation: The Planet Wheeler has contributed to AWF through two grants in 2008/09. They granted AWF \$50,000 towards operations, and \$15,900 towards the Disability Daycare Project in Vietnam. In 2009/10 Planet Wheeler has granted AWF a further \$50,000 towards operations.

The Planet Wheeler operational grant has paid for two part-time employees for AWF - Lucinda Hartley, who is working four days a week. (Part of Lucinda's wage is covered by RMIT through a LTIF grant); and Rebecca Adams who is working two and a half days a week for AWF.

The Thomas Foundation: AWF received a grant of \$17,200 in April 2008 to travel to and hold workshops with Injalak Arts and Crafts Centre and Maningrida Arts and Cultural Centre, both in Arnhem Land. These workshops were to help ascertain the design requirements for the respective arts and cultural centres. Scoping reports have been completed for each of these projects. See attached projects updates for details on these projects. After the completion of the above projects, \$9,056 still remained from this funding. Permission was sought and obtained from the Thomas Foundation to roll the funds into two new projects in Wadeye, Northern Territory that AWF has taken on and will complete in the second half of 2009.

City of Melbourne: AWF was given \$24,000 by the City of Melbourne, which was raised through the EcoEdge conference. \$21,000 of this money was directed towards the Anganwadi (Pre-schools) Project, in Ahmedabad, India. See attached project summary for details on this project. In the financial period 2008/2009, \$8,000 of this money was remaining, and \$5,000 of that spent on anganwadis.

RMIT University: RMIT provides in kind sponsorship through the provision of an office for AWF to work from, as well as administrative support through the management of funding.



Project updates

1. Anganwadi project

Ahmedabad, India

Summary: Preschools, locally known as ‘anganwadi’, in the slums of Ahmedabad, India consist of inadequate structures and environments, and are not conducive to childhood learning. AWF joined forces with organisations Bholu and Manav Sadhna to rebuild the anganwadis by both providing design input and by sending teams of skilled AWF architects and volunteers. The vision is to upgrade and rebuild all 66 anganwadis in the Tekra Slum community and transform the existing humpy-like sheds into beautiful, safe spaces for the children to learn, have a meal a day and regular health checks. The anganwadis are constructed by local labourers in Tekra and building materials are largely re-cycled, in order to support the Manav Sadhna philosophy of “Re-Use, Reduce, and Re-Cycle”.

Update: In November 2008, Jodie Fried, founder of Bholu Pty Ltd and Jane Rothschild, AWF Project Director went to Ahmedabad and met with AWF volunteers, surveyed sites, met with the builder and set up the volunteer program with Manav Sadhna. Since that scoping visit, 6 AWF volunteers have travelled to Ahmedabad for periods ranging from 3 weeks to 5 months. In that time, they designed and built 5 new anganwadi (pre-schools) which have now all been completed. Bholu’s 3, 4 5,6 and 7 have been decorated and inaugurated and the children and teachers are settled into the new schools. The funds for the construction of these schools were donated through the generous support of the City of Melbourne.

In the coming building season (October to February) seven AWF volunteers will travel to Ahmedabad to design and coordinate the construction of further anganwadis.



images from top to bottom:
 1. Bholu 5 exterior. 2. Bholu 7 interior 3. Children at the inauguration of Bholu 6.
 4. Bholu 7 exterior . 5. Bholu 6 ventilation detail.



2. Dien Ban Disability Day Centre

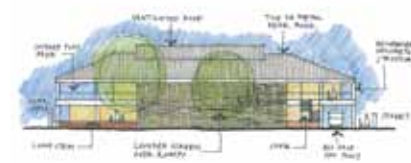
Quang Nam Province, Vietnam

Summary: The Dien Ban Disability Day Centre is a proposed health and educational facility that the Kianh Foundation plans to build in 2010 in order to meet pressing needs for disability support and services in Dien Ban/Hoi An, Central Vietnam. The Kianh Foundation is a UK charity that has been helping disabled and disadvantaged children at the government-owned Hoi An Orphanage in Hoi An since 2002. It hopes to expand its work by building a separate, purpose designed facility in Dien Ban, located 8 km from Hoi An. Dien Ban was heavily bombed during the war and has the highest proportion of disability in the Province. There are over 800 children with disability who do not have access to essential education and therapy services. The Disability Day Centre will help to address the gap in services by providing medical and educational assistance to a large number of disabled and disadvantaged children in the area. It also aims to set a benchmark in green building design.

Status: AWF are working with pro-bono partner, BURO Architecture, from Melbourne, RMIT University, RMIT International University Vietnam (RIUV) and the Vietnam Green Building Council (VGBC) in preparing the second and third phases of the design process which are design development and community consultation respectively. Sketch design plans have been prepared by BURO and two cost estimates have been provided by Mr. Loi and BK Asia Pacific. The cost for the building is estimated to be between \$350,000 - \$450,000 USD.

The proposed site for the project has recently been changed and AWF are awaiting advice from the Kianh Foundation as to the location of the new site. The construction is expected to begin during mid-2010 and the first phase is planned to be completed by early 2011 so that the centre can begin functioning.

This project has been generously funded by the Planet Wheeler Foundation and RMIT University.

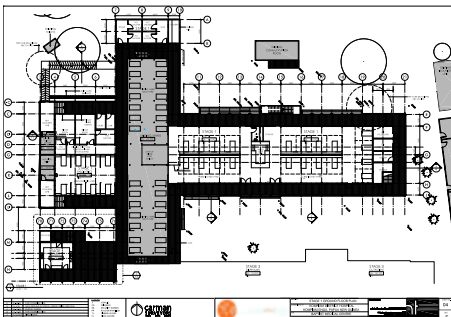


images from top to bottom:
1 Perspective view of proposed Day Centre. 2. South Elevation. 3. Section
All design and images by BURO Architects + Interiors

3. Kompian District Hospital

Enga Province, Papua New Guinea

Summary: This is the largest project undertaken by AWF to date. It is based on collaboration between AWF and Engineers Without Borders. Located in Enga Province about 5 hours drive from Mount Hagen, which is the entry point to the Highlands of Papua New Guinea, Kompian Hospital currently has 38 beds. This project will expand the number of beds to 70, as well as providing improved facilities for wards, dispensary, outpatient wing and operation theatres.



Project Update:

The architectural drawings done by AWF volunteers and managed by Catherine Sullivan Architects, and structural drawings by Engineers Without Borders, were handed over to Nettleton Tribe Architects who are doing the construction documentation for the hospital in a pro-bono capacity. Currently the focus is on the pediatric ward for which funding has been sourced from the PNG government, and which will begin construction in December 2009. A project manager from Adelaide (Tony Michaelbach) has been engaged, and he is planning to go to PNG in 2 weeks to source materials specified in the project.

Lilian Arli, from Nettleton Tribe, is working closely with the structural engineer, Tamri Curran, from Bilfinger Berger Services, who are volunteering their expertise to the project through Engineers Without Borders.

images from top to bottom:
1 - 3. Images of the model of Kompian Hospital developed by pro-bono firm, Nettleton Tribe Architects 4. Paediatric wing to begin construction in December 2009.



4. AWF/Ozquest Nepal Design Build Project

Gosshing Kaule Village, Nepal



Summary: In December/January 2008/09 AWF Director David Anderson led a group of 12 architects and students to Nepal for a 28 day trip which involved ten days spent at Gosshing Kaule village assisting the villagers in designing and building a new school.

Background and Description: This is the third year that AWF has run this project in collaboration with Ozquest, a not for profit program run by the Duke of Edinburgh Award in Victoria. During their time in the village the volunteers developed the design for the school rooms, taking into account solar access and space planning. They then excavated the site for footings and classrooms, mixed concrete, assisted with the concrete pour, and carried rocks from the quarry. While in the village the group also had the chance to become involved in the Solar Light for Children program, which aims to provide a solar powered light for all children, which is then charged through solar panels while they are at school. Gosshing Kaule village has no power supply, so this allows the children to study and provides an incentive to go to school as it provides their household with illumination.

Project Update: This program will be run again in 2009/10, and is currently advertising places for volunteers. The project for the upcoming trip is the design and construction of a kindergarten facility for a village, and will leave on 28th December 2009 for four weeks.

images from top to bottom:
1. Volunteers work with local trades people pouring concrete
2. Working on the site
3. Solar light donated by AWF volunteers to the village of Gosshing Kaule.

5. Cakaudrove Women's Resource Centre

Fiji

Summary: This project consists of the design and construction of a Women's Resource Centre in the town of Savusavu in Cakaudrove province. The project leaders are Loata Ho, Lucia Wellington and Emma Healey, who are working with the community to make this project happen. Also included in this project are community canteens and wood-fired ovens to allow the women to generate income within the community for providing bread-making services.



Project Update: The Cakaudrove Women's Centre have acquired the land needed for the project, and it is now registered in their name, making it possible to move on with the project. This is a great achievement for the women, who have opened an account to start fundraising for the building. The project has the appropriate permissions needed to source local materials needed for the building.



The wood fired ovens plans have been completed, and the project is currently looking for a project supervisor in Fiji. These ovens will be built by the community from local materials



The AWF team is also helping the women to design a recipe book of local vernacular recipes to help raise funds for the project

images from top to bottom:
1. Consulting with the community 2. The site acquired for the project 3. AWF volunteers meeting with the women of Loa.



6. Gunbalanya Cultural Centre

Arnhem Land, Northern Territory



images from top to bottom:
1. View towards the proposed site from Injalak Hill. 2. AWF community workshop.
3. Proposed plan

Summary: Supported by Thomas Foundation funds, AWF has designed a much needed Cultural Centre and produced a scoping document for the community of Gunbalanya after undertaking community consultation in 2008.

Background and Description: Injalak Arts and Crafts asked Architects Without Frontiers to assist them in procuring a new Cultural Centre for the Gunbalanya community by designing the building and providing a scoping document to help obtain funding for the new facility. This relationship was supported by the Indigenous Coordination Centre (ICC) in Darwin, who in April 2008 took three AWF members to Gunbalanya to do a site visit and community consultation. A well-attended meeting of stakeholders was arranged, and AWF had extensive discussions with traditional owners, artists and other future users about what was required by them, and how they envisaged their Cultural Centre. Following this AWF returned to Melbourne and came up with a design proposal for the Cultural Centre.

A second stage trip took place in June 2008 when AWF took the design back to the community to present for feedback. Following this, the design was adjusted in accordance with the response, costed, and included in a scoping document that collates information on the project as well as the building design which Injalak Arts and Crafts with the ICC can use to help them procure funding for the project.

Update: The scoping document was returned to Injalak Arts and Crafts in August 2008, completing this phase of AWF's involvement in this project. The Cultural Centre is currently having a business feasibility study completed, and the outcomes from this with AWF's scoping report will be used to apply for funding for the Centre.

The success of this project has led to AWF being approached by the Wadeye community to scope two projects along similar lines to this one.

7. Maningrida Arts Centre

Arnhem Land, Northern Territory



Summary: AWF has provided a scoping document for Maningrida Arts and Culture (MAC) and the Bawinanga Aboriginal Corporation (BAC) to help them to galvanise the building of a new Arts Centre more suited to their current needs.



Background and Description: Ian Munro, CEO of the (BAC), asked AWF to revive this project which was designed by Slmon Scally of Build Up Design in 2005 following consultation and assessment of the situation. Despite the existence of over \$3 million in funding for this project, and good community capacity, it had stalled. The current facilities of MAC are badly inadequate for the needs of the community, as observed by two AWF members who visited the community in April 2008. AWF agreed to create a scoping document which collated the current information on the project, had the cost estimate updated, and looked at options for getting the project built. This report was completed in August 2008, and can be seen in the Appendix of this report.



Update: When the building was re-costed the price was found to have escalated due to building cost rises in outback areas. The project is currently being reviewed. AWF will continue to assist this project wherever it can.

images from top to bottom:
1. Local art workers. 2. Existing conditions - crowded gallery space.
3. Locally made bricks which can be used to build the project



New projects 2009

1. Wadeye Business Centre



Wadeye, Northern Territory

Summary: Wadeye is a large Indigenous Community in the North West of the Northern Territory, 230 km south-west of Darwin, and formerly known as Port Keats. In April 2009, AWF was asked by the Thamarrurr Development Corporation (TDC) if we would assist with sketch design and scoping services for two projects. The first is a Business Centre which will accommodate essential government services such as Centrelink, Job Futures, Batchelor College and FaHCSIA, as well as some private industry, and the TDC. The TDC has asked AWF to provide a sketch design and scoping report to enable them to apply for Aboriginal Benefit Account (ABA) and Indigenous Business Australia (IBA) funding. The aim of these projects is to assist the community to develop economic self determination.



Project Update: Two visits to Wadeye were made by AWF volunteers in October and November 2009. The first, in early October, was a consultation and scoping visit, after which a sketch design was prepared. The second visit, in mid-November, allowed AWF to show the sketch design to the stakeholders and obtain feedback on the proposal. AWF is currently waiting on feedback from the Traditional owners, after which alterations can be made, the proposal costed, and a scoping report prepared. This needs to be available to the client by January 2009 to make the next round of IBA funding. These scoping visits have been financially assisted by funding remaining from the previous NT projects by the Thomas Foundation. Permission for this use of the funds was secured by AWF for this purpose. The TDC has also funded AWF's first consultation visit for the two projects with \$5,000.



images from top to bottom:
1. William Parmbuk shows AWF volunteer Mick Pearce the site. 2. Garry Ormston discussed the design proposal with locals in Wadeye. 3. Site plan produced by AWF.

2. Thamarrurr Arts and Cultural Centre

Wadeye, Northern Territory

Summary: The Thamarrurr Arts and Cultural Centre is also in Wadeye, and AWF will provide the same services as for the Wadeye Business Centre, on the same trips to Wadeye, that is a sketch design and scoping document, including costing.

Project Update: As above.

3. Taree Child and Family Centre

Taree, New South Wales, Australia



Summary: Project partners Child Care Services Taree and Good Beginnings Australia have approached Architects Without Frontiers to design a community building to house Early Childhood Services administration, as well as a toy library, playgroups, family services, maternal health services and community events. AWF's role will be to connect our project partner with a pro-bono firm who will consult with local Council and stakeholders, and then provide master planning and schematic design drawings to help the client meet Council guidelines.

Background and Description: This project will involve community consultation, design conception and the production of a scoping document and master plan in the first instance to help the clients realise the project, which would be of great benefit to the Taree community. The project would be built on council owned land in central Taree pending the design meeting Council requirements.

Project Update: Pidcock Architects have taken on this project in a pro-bono capacity. They have carried out consultation with stakeholders and the client to prepare a brief, masterplan and scoping document. This has recently been completed and handed over to Good Beginnings, awaiting their feedback.

images from top to bottom:
1. Perspective view from bike path. 2.
Perspective view from Myall Ave. 3.
Masterplan .
Design and images produced by Pidcock
Architects



4. Indlovu Project - Community Building Monwabisi Park, Khayelitsha, Cape Province, South Africa

Summary: The Indlovu Project was established in 2005 and is supported by the Shaster Foundation. Entirely community driven to satisfy community needs, it forms the heart of the Monwabisi Park informal settlement. Before being destroyed by a fire in November 2008, the Indlovu Centre included a Montessori pre-primary school, a medical clinic, a youth centre, a guest house, a community learning centre, a laundry, a soup kitchen and a vegetable growing initiative. Reconstruction began with the creche in January 2009, but a great deal of support is still needed to effectively rebuild the centre. AWF was introduced to this project by the Planet Wheeler Foundation in January 2009, and two AWF volunteers - Zvi Belling and Lani Fender - traveled to Cape Town to consult with the community on site. As a result AWF has been asked to provide pro-bono services for the rebuilding of the Community Centre.



Project Description: This project is a proposal for the design of a community building, situated in the informal settlement of Monwabisi Park, in Khayelitsha, South Africa. In addition to the Community Centre, there is also a plan for a long term partnership between the Shaster Foundation and AWF to scope not just the building, but the development of a four stage project which includes the Community Centre (stage 1), a water and sanitation block including 18 composting toilets, laundry facilities and accommodation for a caretaker (stage 2), the design and testing of a prototypical housing model (stage 3), and the implementation of a broad scale housing program using the prototype housing model trialed in Stage 3 (stage 4). AWF's current role within this project is to firstly scope the four stages of the project, forging a long term collaboration between AWF and the Shaster Foundation, and secondly to complete the sketch designs for Stage 1.

images from top to bottom:
1.Children outside a typical building in Mobwabisi Park informal settlement. 2. AWF volunteer Lani Fender with local children. 3. Perspective of design proposal for Community Centre.

www.architectswithoutfrontiers.com.au



architects|without|frontiers
australia